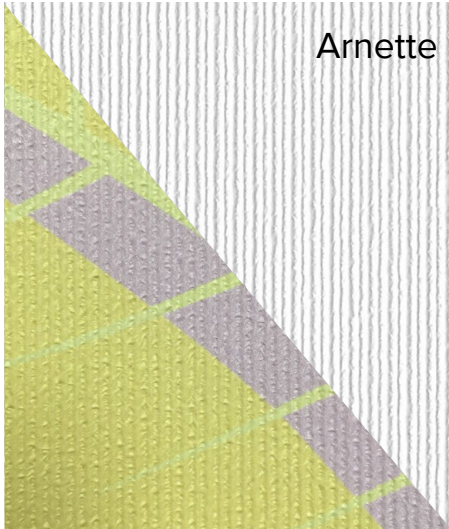


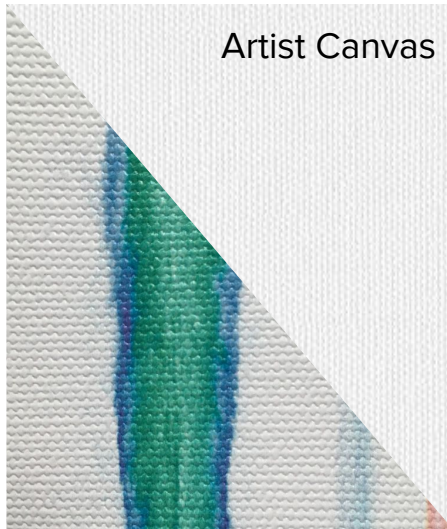
# STANDARD TYPE II WHITE VINYL

1

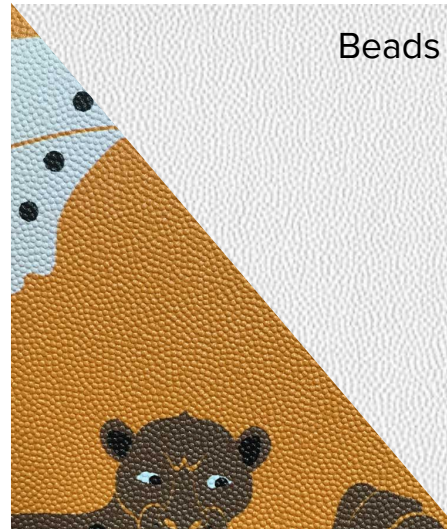
Arnette



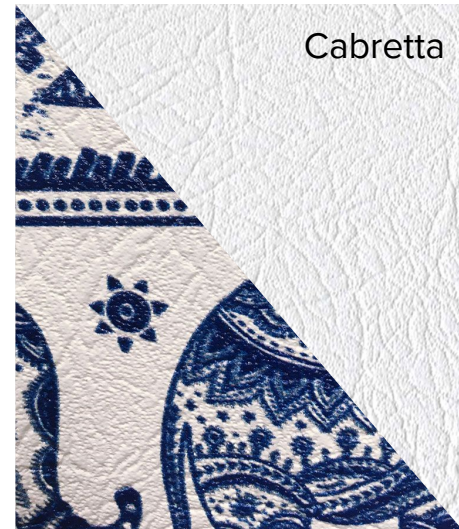
Artist Canvas



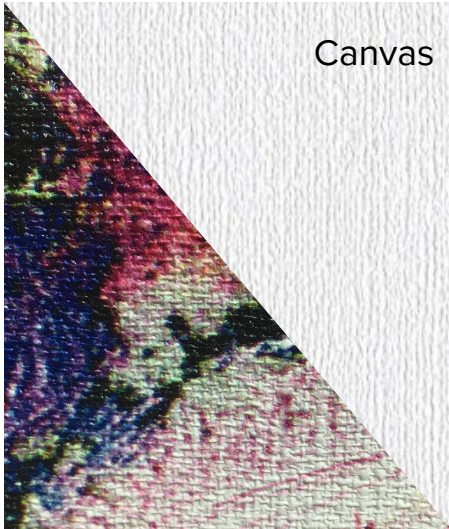
Beads



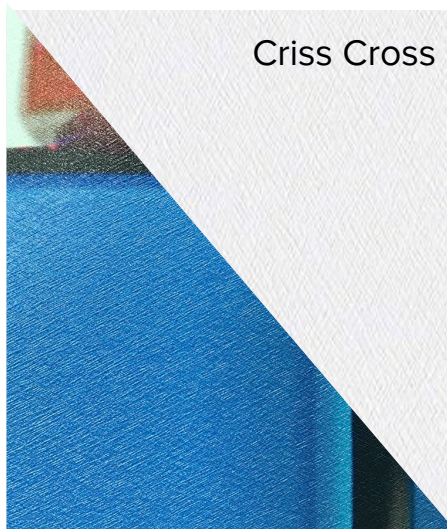
Cabretta



Canvas



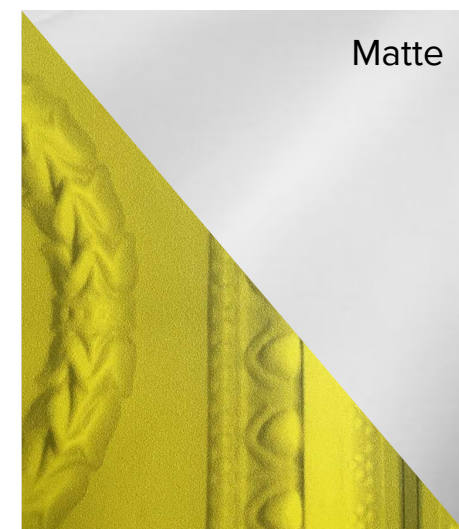
Criss Cross



Luster

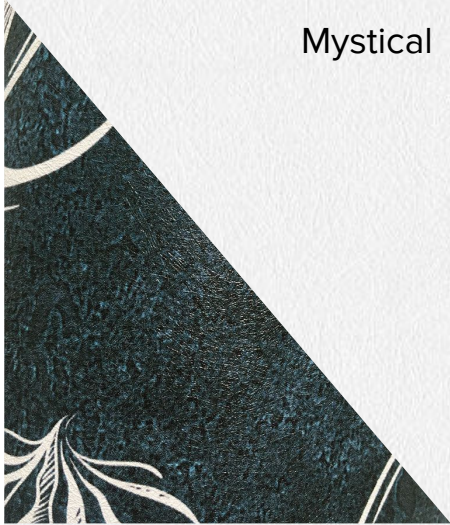


Matte

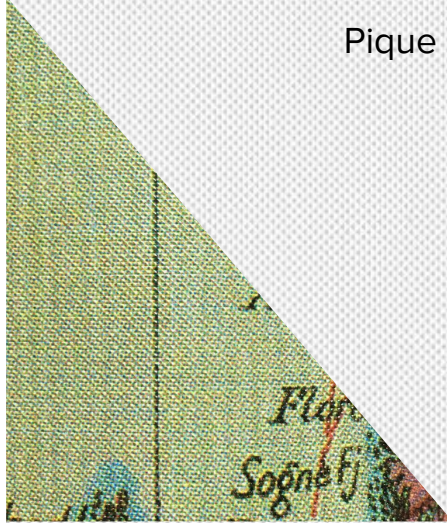




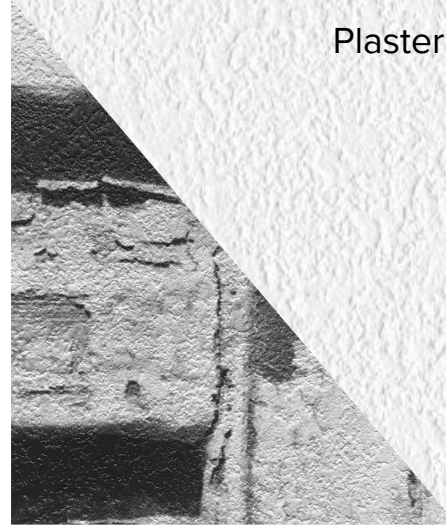
Mystical



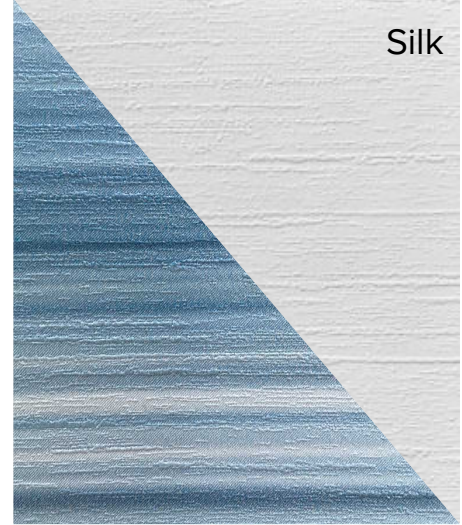
Pique



Plaster



Silk

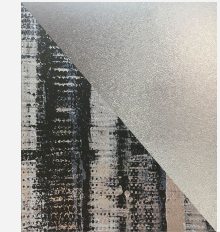
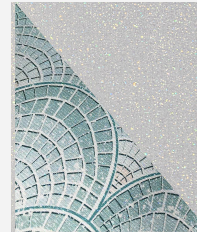
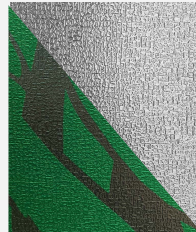
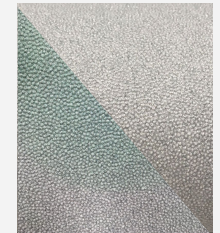
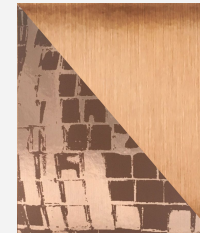
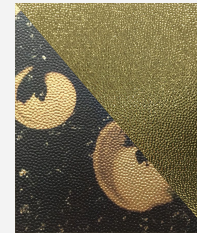
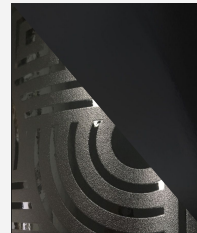


Suede



Sample of  
Special  
Effects Vinyls  
available

*Note: These do  
not fall under  
same pricing  
tier as Standard  
Type II Vinyl.*



## PHYSICAL PROPERTIES

Product Weight: 20 oz. per lineal yd., (13oz. per sq. yd.)

Vinyl Weight: 17 oz. per lineal yd.

Fabric Weight: 3 oz. per lineal yd.

Thickness: 0.015 to 0.030 in.

\*depending on texture

Fabric: Poly-Cotton Osnaburg or Polyester Nonwoven

\*depending on texture

## BREAKING STRENGTHS, LBS. FORCE

Machine Direction-warp:

\*Exceeds Type II minimum of 50 lbs.

Cross Machine Direction-fill:

\*Exceeds Type II minimum of 55 lbs.

## TEARING STRENGTH, SCALE

Machine Direction-warp:

\*Exceeds Type II minimum of 25lbs.

Cross Machine Direction-fill:

\*Exceeds Type II minimum of 25 lbs.

COLD CRACK RESISTANCE @ 20°F

No change

## HEAT AGING (7 DAYS @ 158°F)

\*Does not become stiff, brittle, discolored, or show loss of grain

## SPECIFICATIONS / TESTING / CERTIFICATION

Federal Specification:

\*CCC-408-D,C,B,A \*Type II \*Class A

Wa Specification:

W-101 Type II

## FIRE TESTING

ASTM-E84 Tunnel Test Class A

NFPA286 Corner Burn Test Class A

NFPA265 Corner Burn Test Class A

EN15102 Class B

\*Meets or exceeds requirements for flame spread, smoke developments and flashover.

## MOLD/MILDEW/BACTERIAL RESISTANCE

ASTM-G21 Specifications:

Passed all requirements of CCCW-408-D

## ENVIRONMENT

Meets or exceeds EN12149 A,B,C - the EU Toxicity requirement for heavy metals (including Cadmium, Mercury, Lead and Antimony), and formaldehyde under EN15102



## 1.0 GENERAL CONDITIONS, REMOVING DAY-TO-DAY SOIL

Ordinary dirt and smudges can be removed with a mild soap and warm water. Clean from bottom of wall upward. Rinse thoroughly with clean water from the top down using a sponge. Deeply embossed wallcoverings need extra attention to remove suds or loosened dirt that may lodge in the embossing. Dry wallcovering with a soft lint free cloth or towel.

For more difficult stains that are only surface deep, the use of a stronger detergent is recommended. Always test an inconspicuous area with the stronger detergent to be sure that the surface and ink are not damaged.

**DO NOT USE** steel wool or powdered abrasives because they can damage the image and textured surface.

**DO NOT USE** solvents, alcohol, pine oil, or cleaners that contain these kinds of products as they can remove the image and damage the textured surface.

When cleaning, always take measures to prevent water from dripping behind molding.

**NEVER MIX CLEANING AGENTS TOGETHER, VIOLENT REACTIONS MAY OCCUR.**

## 2.0 SURFACE PROTECTION

HD walls prints using durable UV inks that are easily cleaned and highly resistant to abrasion from surface contact.

We recommend DreamGuard Protex 3 for an extra measure of protection where surfaces are exposed to frequent collisions, scuffing, food stains, etc. DreamGuard Protex 3 is a water-based, non-hazardous topcoat that can be applied with commercial liquid laminating equipment as well as with a paint roller. Surfaces treated with DreamGuard Protex3 are significantly more durable in heavy wear areas.